



The CADWorx Model Dash Board

Plant EDGE brings all of your model's data into a single grid view that can be sorted, filtered, and grouped in any way imaginable. The user can add and remove columns and display them in any order that is desired and then save that view for future use by the individual or by the entire design team. The BOM can be displayed in the typical CADWorx Single, Cut, or Total modes. Powerful search and filtering capabilities allows the user to find erroneous data and quickly change it. Edits can be made on individual items or across multiple items at once. The interactive dashboard provides the capability to zoom to and flash as well as hide and show objects in the model, based on selections in the grid. By drilling down through multiple levels of x-referenced files, searches can be made through the entire plant model in just seconds.

Link S.	Size	Short Description	Long Description	Tag	Spec	Layer	Item Number	UOM	Qty	BOM	Unit Weight	Total Weight	Length	Component
STUD	(20) STUD, 1 1/2" x 10 1/2"	LG,UNC,A-193-B7M,CADMIUM COATED,W/ (2)	A-194-2HM HVY HEX NUTS		D2	System	G110-0150X10...	EA	1		150	150	0	
STUD	(20) STUD, 1 1/2" x 10 1/2"	LG,UNC,A-193-B7M,CADMIUM COATED,W/ (2)	A-194-2HM HVY HEX NUTS		D2	System	G110-0150X10...	EA	1		150	150	0	
STUD	(8) STUD, 5/8" x 4 3/4"	LG,UNC,A-193-B7M,CADMIUM COATED,W/ (2)	A-194-2HM HVY HEX NUTS		D2	System	G110-0062X04...	EA	1		4	4	0	
STUD	(8) STUD, 5/8" x 4 3/4"	LG,UNC,A-193-B7M,CADMIUM COATED,W/ (2)	A-194-2HM HVY HEX NUTS		D2	System	G110-0062X04...	EA	1		4	4	0	
PIPE	PIPE,2",S/160,0.344"VIT,SMLS,A-106-B				D2	16-D2-CS-GP...	450-0200H?? P...	LF	1		7.46	18.65	2.5	
PIPE	PIPE,2",S/160,0.344"VIT,SMLS,A-106-B				D2	16-D2-CS-GP...	450-0200H?? P...	LF	1		7.46	7.46	1	
PIPE	PIPE,2",S/160,0.344"VIT,SMLS,A-106-B				D2	16-D2-CS-GP...	450-0200H?? P...	LF	1		7.46	7.46	1	
PIPE	PIPE,16",S/60,0.656"VIT,SMLS,A-106-C				D2	16-D2-CS-GP...	450-1600H?? P...	LF	1		108	310.545	2.8754	
PIPE	PIPE,16",S/60,0.656"VIT,SMLS,A-106-C				D2	16-D2-CS-GP...	450-1600H?? P...	LF	1		108	378	3.5	
U-BOLT	U-BOLT,7/8" FOR 16" PIPE,CS,W/ (4) HEAVY HEX NUTS				D2	System	H0800	EA	1		9.57	9.57	0	
U-BOLT	U-BOLT,7/8" FOR 16" PIPE,CS,W/ (4) HEAVY HEX NUTS				D2	System	H0800	EA	1		9.57	9.57	0	
ELBOW,90D,LR	ELBOW,16",S/60,90D,LR,BW,A-234-WPC				D2	16-D2-CS-GP...	229-1600H??	EA	1		450	450	0	
TEMPERATURE GAUGE	TEMPERATURE GAUGE			TI-1010	D2	16-D2-CS-GP...	???	EA	1		1.5	1.5	0	
											70022.8587			

Plant EDGE brings unprecedented visibility and interaction with a dashboard view of your CADWorx Plant and Steel Models.

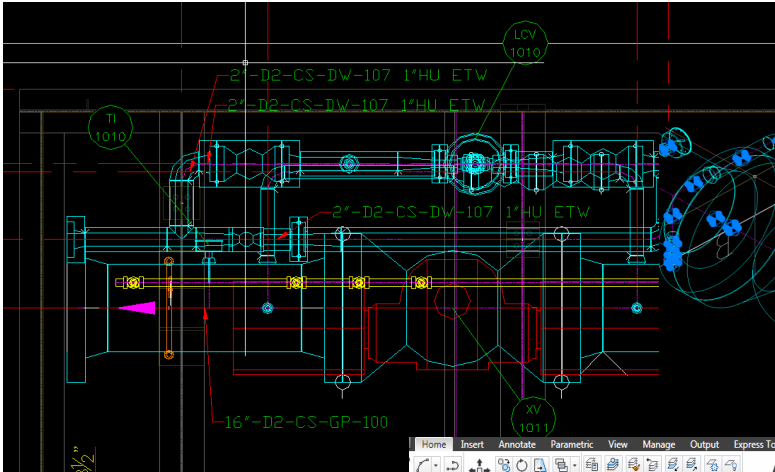
Highlights

- Sort, Filter, Group by any combination of columns
- Smart Line, Equipment, Valve, Instrument tags
- Smart BOM Item Bubbling Utility
- Enhanced Weight and CG calculation Method
- Powerful Search Features
- Zoom to, Flash, Hide and Show Selected Entities
- Drills down to pull in x-ref data
- Tail Dimension base point location audit



Smart Tags

Plant EDGE allows the user to place tags for Line Numbers, Equipment, Valves, Instruments, and Miscellaneous Inline Components by simply selecting the entity and then placing the tag where required thus eliminating manual input and the possibility of miss-tagging. But even more importantly, these tags are intelligent such that the CADWorx data changes within the source object, the tag text will automatically be updated and flagged in red for all changed data. Of course the red flag can be cleared by the user when ready.



Weight & CG Calculations

Plant EDGE allows the user to quickly and accurately calculate weights and CG's on combined CADWorx Plant and Steel models and visualize the results within the CAD environment. When the routine is run, it performs a logical test to determine if CG locations seem to be in error and alerts the user to discrepancies. The CG indicator block stores name and date each time it is run and when the model changes updates are quick and easy.

Smart BOM Tool

Plant EDGE provides a unique alternative to the CADWorx method of creating the drawing BOM which allows for the preservation of the entity's tag number when a revision is made by using smart tags that are tied back to the model. The item's tag number is stored in the entity and when the BOM is regenerated it will be preserved OR if it is changed in the model, all instances of the tag will be updated throughout the drawing. The tagging process is very quick and lets the user place the bubbles where and how they want them.

ITEM	QTY	DESCRIPTION	Length	MATERIAL	WEIGHT
1		2 WIDE FLANGE, 14" X 43#		36 A-36	43
2		2 WIDE FLANGE, 14" X 43#		13.3083 A-36	43
3		6 WIDE FLANGE, 10" X 33#		13.3083 A-36	33
4		1 WIDE FLANGE, 10" X 33#		5.0592 A-36	33
5		1 WIDE FLANGE, 10" X 33#		4.182 A-36	33
6		1 WIDE FLANGE, 10" X 33#		4.1425 A-36	33
7		2 WIDE FLANGE, 10" X 33#		3.6421 A-36	33
8		1 WIDE FLANGE, 10" X 33#		3.412 A-36	33
9		1 WIDE FLANGE, 10" X 33#		2.6668 A-36	33

Export Data to Excel

Plant EDGE allows the user to drop any selected data set to Excel. All columns, column order, sorting, filtering, grouping, etc. applied to the selection set will be exported as well. Since virtually every column available in the model is a column available in the EDGE grid and has x-ref drill down capability, data can be viewed and interrogated in exciting new ways that were previously impractical or impossible. EDGE gives you complete data visibility and control.